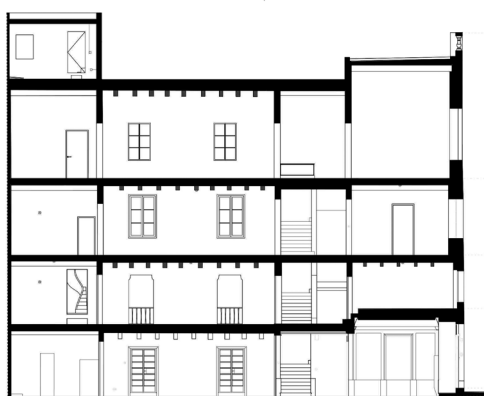


# BLITZ RESIDENCY PROGRAMME



## 2018 RESIDENCY APPLICATION GUIDELINES

[thisisblitz.com](http://thisisblitz.com)  
[blitzresidency.com](http://blitzresidency.com)

# BLITZ RESIDENCY

---

## ABOUT BLITZ

Blitz is an independent, not-for-profit, project space which supports experimental and radical contemporary arts practice in all its forms. Blitz projects focus on fostering local creative talent, as well as building a relationship between a Maltese artistic context and an international cultural network through border-crossing curatorial and artistic exchanges.

Blitz is a curated space offering a high-calibre programme with a focus on contemporary existence, its constant state of flux, and the ubiquitous presence of digital culture. Our mission is to work closely with artists, curators, writers and researchers who are articulating these trends through cross-media and trans-disciplinary practice, to present a programme that is educational, immersive and inclusive.

The Blitz building is a 400-year-old Valletta townhouse, lovingly restored to its former glory. Large blank walls and beautiful pattern-tiled floors can be found in every room on each of its three floors. Since 2013 the building has been repurposed as a space for exhibitions and events, as well as a social space for the creative and the curious.

---

## WHAT WE ARE LOOKING FOR

Blitz is putting out an open call for proposals from highly motivated individuals from all artistic disciplines, including (but not limited to) film, photography, performance, painting, sound, architecture, electronic music, installation and digital platforms.

Successful applicants will become Blitz residents and be given a space to work, experiment and research their project, culminating in a final production for presentation to the public. Each resident has access to the Blitz curator to work with throughout their stay in support of their research and the realisation of their final presentation. The curator will be in discussion with the resident prior to and during their visit to Valletta about their work and intentions. The curator's role will be to guide, discuss and work with the resident towards an idea or concept that is agreed upon by both parties.

Local engagement is crucial to the programme, taking the form of open studio days, workshops and talks for a local community of artists, researchers, educators, professionals and students. The residency aims to create a dialogue with the social, material, aesthetic and architectural infrastructure of the city and beyond, including the island's natural environment.

---

## ABOUT THE RESIDENCY

The Blitz Residency Programme provides the opportunity to live and work in Valletta and to develop individual projects while experiencing and engaging with city's rich cultural heritage, and expanding artistic activity and research in Malta. Blitz is a unique space in the heart of the city that will be European Capital of Culture in 2018.

The residency space is a self-contained live/work space with good natural and artificial light. It includes basic cooking facilities, a private bathroom, bed space and storage area. Access to common areas and facilities within the building include a shared studio space, courtyard, washing machine and wifi. Some basic tools can be borrowed from the gallery, however visiting artists are responsible for providing their own tools and materials.

Each resident has access to Blitz staff, associates and friends, who will offer guidance and support, and introduce the resident to the local scene and the Blitz network. Our aim is to foster and encourage collaborations which are sustainable beyond the framework of the residency.

---

**APPLICATION DEADLINE: 31 AUGUST 2017**

# ONLINE APPLICATION FORM

The programme is open to international artists, architects, curators, writers and researchers, and cultural managers. Applications are only accepted during the open call period. Please check all of the guidelines in this document before submitting your application.

Only electronic applications are accepted. Please use Adobe Acrobat to type into the PDF form fields, or else print, complete by hand and then scan. All submissions and required supporting material should be sent to [residency@thisisblitz.com](mailto:residency@thisisblitz.com) as either a direct email attachment, or shared with [residency@thisisblitz.com](mailto:residency@thisisblitz.com) via Dropbox or Google Drive. Attachments must not exceed 10MB.

To apply for a Blitz residency please fill in the application form and send it together with your CV and a portfolio of no more than 10 works. Selection is not based solely on applicants' academic or professional background but our selection panel will give particular attention to strength of project proposal and integration with local audience and community. Shortlisted applicants will be selected for Skype interviews with the selection panel. All applicants are expected to be fluent in English.

---

## SELECTION PANEL

Decisions are made by a selection panel which is made up of Blitz staff, practising artists and other arts professionals. For more information visit <http://blitzresidency.com/about/selection-panel/>. Applications will be assessed within approximately four weeks of the deadline. Please note that only selected applicants are informed. Decisions are final and cannot be negotiated.

---

## VISUAL MATERIAL

Please submit work that has been completed in the past 3 years.  
Material in excess of the limits below will not be viewed by the committee.

- 10 images in jpeg format, maximum size 1MB per image
- 2 minutes (maximum length) digital video, hosted via Youtube or Vimeo.

---

## DURATION, AVAILABILITY & FEES

Individual residencies can be up to four weeks, starting in January 2018. Selected residents will be given a dedicated live/work space within the Blitz building, while also having access to facilities and public areas of the building. Applicants from all over the world may apply. Blitz in-house residency apartment is free for our selected residents and includes utilities, wifi and use of equipment and communal spaces. No grants are currently available, however we can contribute towards travel costs and residency output (see budget below). Selected candidates are issued a letter of acceptance for individual grant-seeking and funding applications.

---

## BUDGET

Travel – € 300  
Production – € 1500

---

# APPLICATION DEADLINE: 31 AUGUST 2017

---

### CONTACT

Nicole Bearman, Programme Director  
[residency@thisisblitz.com](mailto:residency@thisisblitz.com)  
M +356 99913919 / W +356 21224992